

PD32



FEATURES 特点

- * Excellent solderability and high heat resistance
良好的可焊性和高耐热性

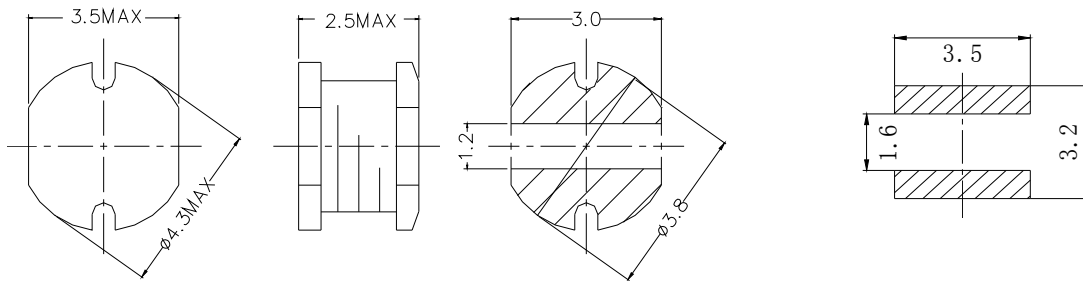
APPLICATION 用途

- * DC / DC 转换器

MEASURING FREQUENCY 测试频率

- * 100KHz 0.3V

Shapes And Dimensions 外形及尺寸示意图



Electrical Characteristics 电气性能

Type 型號	Indicate 表示	Inductance 電感值	D.C.R(Max) 直流電阻(m)	Rated Current(Max) 額定電流(A)
PD32-1R0	1R0	1.0 μ H \pm 20%	0.07	2.08
PD32-2R2	2R2	2.2 μ H \pm 20%	0.13(0.059)	1.39
PD32-3R3	3R3	3.3 μ H \pm 20%	0.20	1.25
PD32-3R9	3R9	3.9 μ H \pm 20%	0.21	1.20
PD32-4R7	4R7	4.7 μ H \pm 20%	0.33(0.101)	1.03
PD32-5R6	5R6	5.6 μ H \pm 20%	0.35	0.91
PD32-6R8	6R8	6.8 μ H \pm 20%	0.43	0.85
PD32-100	100	10 μ H \pm 20%	0.65(0.235)	0.74
PD32-120	120	12 μ H \pm 20%	0.82(0.64
PD32-150	150	15 μ H \pm 20%	0.90	0.60
PD32-180	180	18 μ H \pm 20%	1.14	0.54
PD32-220	220	22 μ H \pm 20%	1.39(0.514)	0.50
PD32-270	270	27 μ H \pm 20%	1.55	0.43
PD32-330	330	33 μ H \pm 20%	2.15(0.94)	0.37
PD32-390	390	39 μ H \pm 20%	2.44	0.36
PD32-470	470	47 μ H \pm 20%	2.68(1.28)	0.31
PD32-560	560	56 μ H \pm 20%	3.05(1.4)	0.30
PD32-680	680	68 μ H \pm 20%	3.48	0.28
PD32-820	820	82 μ H \pm 20%	3.84	0.25
PD32-101	101	100 μ H \pm 20%	5.76	0.20
PD32-121	121	120 μ H \pm 20%	6.62(2.6)	0.19
PD32-151	151	150 μ H \pm 20%	7.36(2.8)	0.17
PD32-181	181	180 μ H \pm 20%	8.38	0.16
PD32-221	221	220 μ H \pm 20%	13.7(4.2)	0.14

* SPQ:3000PCS/REEL

The sample parameters are based on actual measured values